

Save on Costs and Increase Processing Efficiency

- CASS Certified™ ZIP + 4® coding, NCOA^{Link}® processing, Dupe ID / Elimination, DSF²®, and PAVE™ Certified Postal Presort are included in the basic service.
- Easy maintenance and no directories to install mean less dependence on valuable resources.
- Automatic updates assure that you are accessing the most up-to-date mail data processing available.
- Various pricing plans allow for flexible budgeting.

Rely on Expert Support

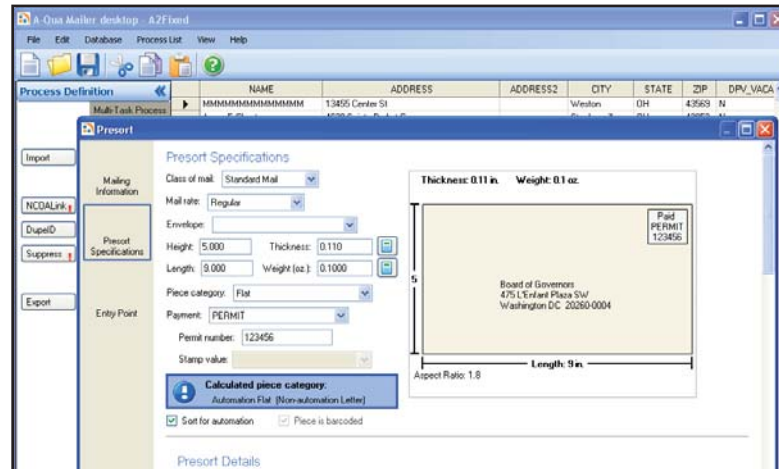
- Lorton Data provides excellent one-to-one customer support via live chat, email, and phone.
- Lorton Data is a USPS® Full Service licensee for NCOA^{Link} processing.
- Lorton Data has 25 years of experience in the postal industry, and continually monitors changing regulations.

* DSF²® available soon

Lorton Data is a non-exclusive Full Service Provider Licensee of the United States Postal Service®. DSF²® processing is provided by a non-exclusive licensee of the USPS®. The prices for NCOA^{Link}® and DSF² are not established, controlled or approved by the USPS. The following trademarks are owned by the USPS: DSF², NCOA^{Link}, United States Postal Service, USPS, Intelligent Mail, IMb, IMpb and ZIP + 4. A-Qua, A-Qua Mailer are trademarks of Lorton Data.

A-Qua Mailer™
desktop

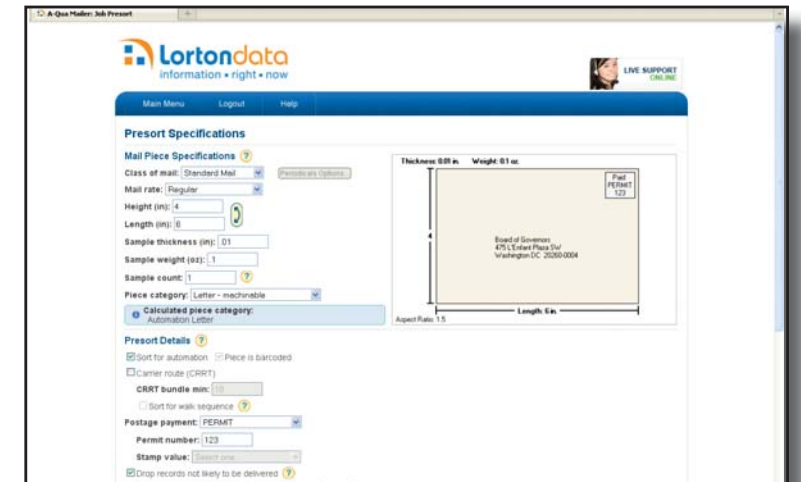
- Grid view for data manipulation and editing.
- Concurrent job submission.
- Easy to use, intuitive interface.
- Merge multiple files and standardize headings.
- All functionality available within the same application.
- Automatic updates.



Presort screen in A-Qua Mailer *desktop*

A-Qua Mailer™
web

- Access services from anywhere, anytime with an internet connection.
- No software to install or maintain.
- Easy to use, intuitive interface.
- Secure connection for data protection.
- Fully automated with A-Qua Mailer *command*.



Presort screen in A-Qua Mailer *web*



Benefit from Robust Features

- **Job Templates and Profiles**
Speed up entry process for repeat jobs.
- **PAF Storage and Management**
Electronically view and manage previously submitted PAFs.
- **Full-Service Intelligent Mail® Barcode (IMb™) Unique ID Management**
Easily refer to all of your unique serial numbers associated with Full-Service IMb jobs.
- **Intelligent Mail® Package Barcode (IM®pb) Support**
Specify the Postal Service's next generation tracking barcode for parcels and extra services.
- **Account Management**
User administrative functionality.
- **Submit Multiple Services at the Same Time**
Save time by choosing all the services for your job at once. No need to start over for each service.



JaMarK & Associates, LLC
262-375-4368
www.Jamarkllc.com

Lorton Data

Lorton Data provides, manages, and analyzes data to enhance our customers' multichannel marketing efforts. From direct mail, to email, phone, advertising and social media campaigns, Lorton Data's strategic approach, extensive capabilities, and renowned customer service result in higher returns on marketing investment.

Gateways to our services include our cloud-based A-Qua™ solutions, and expert assisted A-View™ services. Both methods enable organizations to create and maintain profitable interactions with their target audience.



©2013 Lorton Data, Inc.
2 Pine Tree Drive, Arden Hills, MN 55112
Phone: 651-203-8290 Fax: 651-203-8299
www.lortondata.com

A-Qua Mailer™

Desktop and Web



Mail data processing solutions

