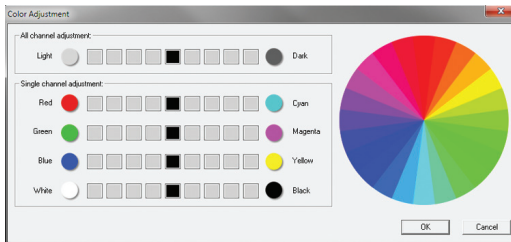


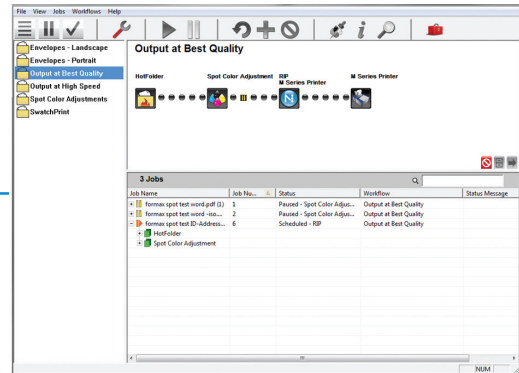
### Professional Print Quality with State-of-the-Art Harlequin® RIP

Formax cmColor RIP and Color Match Software combines tools for color management, spot color matching, hot folders and production job presets, with the powerful Harlequin® RIP engine to provide a seamless workflow solution. Achieve outstanding overall image quality, with predictable and repeatable color standardization. cmColor features a user-friendly job interface, with tools to manage jobs and deliver professional color output, time after time. cmColor Software is designed to be used with the ColorMax7 Digital Color Printer, and is ideal for both businesses and commercial printers.



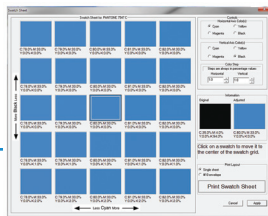
### Harlequin® RIP Technology

The commercial printing world demands robust and reliable RIP software that provides high performance, quality and efficiency. cmColor is built with state-of-the-art Harlequin RIP, the expert printer's choice, which maximizes productivity and output quality when used with a ColorMax7 Digital Color Printer.



### Workflow Productivity

Submit, manage and preview jobs from anywhere on the network using a MAC® or PC. cmColor stores and saves print files and configurations for future use, making repeat jobs quick, easy and consistent.



### Advanced Color Management & Spot Matching

cmColor RIP automatically identifies spot colors in an image, allowing users to easily edit, adapt and match existing color specs. During the process, users can print color swatches on material, compare, adjust the colors, save the changes per job or globally, then proceed to printing.



Windows® driver



cmColor software

### ICC Profiles

To provide the best possible output on a wide variety of papers, ICC color profiles are built into the software. This ensures optimal color on materials including standard grade envelopes, office paper, inkjet gloss and matte finish stock and inkjet envelopes.

The examples above reflect the difference between printing the same file on identical envelopes using the Windows® driver, versus the cmColor RIP software.

## cmColor - Host / Server Computer Specifications

### Recommended System Requirements

- 3 Ghz Dual/Quad Core, Core i5 recommended
- DVD ROM
- 3 Available USB 2.0 ports
- Formax recommends that the Host / Server Computer be a stand-alone unit, dedicated to use with cmColor and ColorMax7
- Windows 7 Professional 32- or 64-bit
- 4+ GB RAM
- 100/1000 Network Interface Card with an active network connection

## cmColor - Workflow PC Client

### Minimum System Requirements

- 2 Ghz Dual Core or higher processor
- DVD ROM
- Clients are available for Windows XP Professional, Windows 2003 Server, Windows Vista Business Professional, Windows 7 Professional 32- and 64-bit. "Home" versions of the operating system are not supported.
- 2 GB RAM
- 100/1000 Network Interface Card with an active network connection

## cmColor - Workflow MAC® OS X Client

### Minimum System Requirements

- OS X 10.7, OS X 10.8
- 2 GB RAM or more

Server requirements vary based on production volume demands and number of client and RIP connections. Recommendations do not include the requirements for other workstation software.

## cmColor - Print Speed

- Prints up to #10 landscape oriented envelopes per hour on the ColorMax7
- Prints up to 1,700 #10 portrait oriented envelopes per hour on the ColorMax7



Formax - New Hampshire, USA  
[www.formax.com](http://www.formax.com)

cmColor Software is designed to integrate seamlessly with the Formax ColorMax7 Digital Color Printer